

# TechnoWand

more than just partitioning





## TechnoWand: more than just partitioning

Since 1994 TechnoWand, established in Aalten, produces partitioning for offices, schools, factory and institutes. In due consultation with our customers and architects, we have specialised in the production and delivery of complex and challenging work environments in recent years.

You may expect something from our partitioning. Selective use of materials and intelligent constructions, are the basis of a high-quality programme. The available finishing and colours are just as varied as these are stylish.

This is why we can deliver individualised custom-made work from floor to ceiling, irrespective of how extravagant or modest the project is.

Next to the standard aluminium partitioning provided with vinyl plaster ceiling, we also deliver wooden and steel partitioning. We also manufacture single and double glazed windows. The glass elements, windows frames and doors are manufactured within our own company. Moreover, we have the possibility to produce custom-made office furniture, such as reception desks, wall-units or kitchenettes.

In short, if you are looking for a versatile and service-oriented partner when completing and arranging your office areas, then TechnoWand is the place to be.

TechnoWand  
more than just partitioning

partitioning	2
fixed walls	4
glass walls	6
full glass walls	8
doors	10
specials	12



# TECHNOWAND PARTITIONING SYSTEMS

Dynamic organisations require flexible housing. This is why TechnoWand partitioning systems are ideally suited when equipping your office. These non-supporting walls can easily be installed and if required, be relocated.

### Basic structure

The frame consists of electro-zincd steel C-profiles, which is installed tension-free into the building construction. The aluminium, ceiling, side and floor profiles are fixed to the construction by means of screws. The top rail is provided with an integrated picture rail.

### Closed elements

These consist of 2 to 4 gypsum panels. The cavity between the panels is filled up by rock wool. The panels are mutually connected by means of aluminium or steel clamp profiles and provided with PVC insert strips or flat aluminium snap-on profiles. For the panels you can make a selection from:

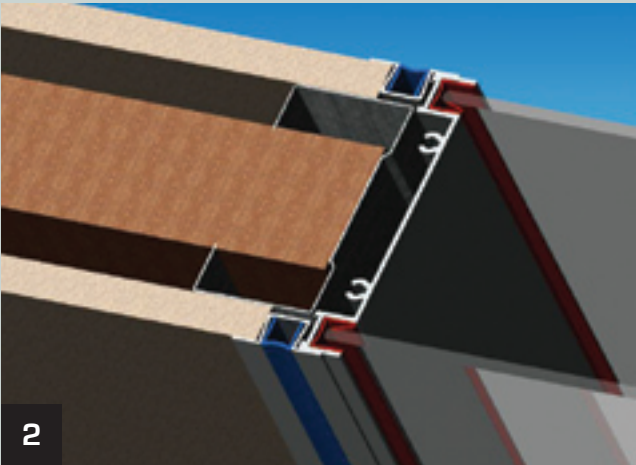
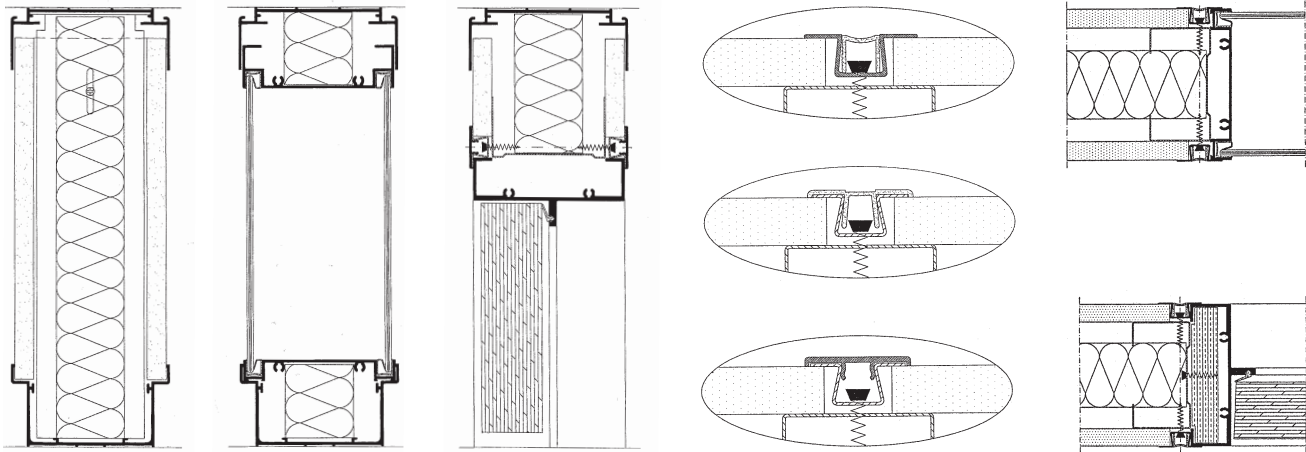
wall vinyl, linen, chipboard made of melamine or steel plate, this is enamelled in RAL colour.

### Glass elements

These consist of double or single glass in monobloc execution. Maximum thickness is 8 mm. The cavity can be provided with blinds or shutters. The glass can be covered with semi-transparent foil.

### Door elements

These consist of a three-part aluminium profile in which the lift-off hinges and astragals are included in the door at the factory. The door stiles are available in a number of models, depending of the type of door you select.



### Technical information

Wall thickness: 100 mm  
Wall height: up to 600 cm  
Modules: 120 cm

### Material

Panels: Gypsum plates 12.5 mm or chipboard 13.0 mm  
Alu. profiles: AlMgSi 0,5  
Isolation: Rock wool, thickness 45 mm  
Covering: Vinyl, textile, melamine, wood veneer or steel plate

### Finishing:

Steel components: Hot-galvanised  
Alu. components: Anodised or enamelled in colour

Sound insulation: 45 dB (report number A752/Peutz)  
Fire resistance: 60 min. (report number 230700995)





# TECHNOWAND FIXED PARTITIONING

The fixed partitioning in our assortment are built on the basis of the metal stud principle. Metal stud partitioning are non-supporting partitioning which are installed on location. Light in weight, but fire-resistant and sound insulated.

### Basic structure

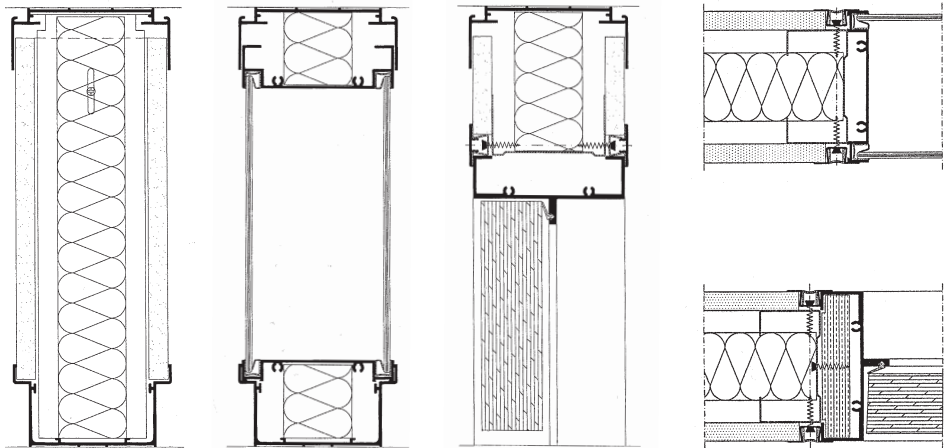
The walls consist of a steel frame onto which on both side a gypsum board is fixed. Next the seams or joints are sealed. The result is a smooth, flat surface. The frame can easily be built-in and all wiring can be hidden from sight, in the cavity. These walls can also be constructed in a curved model. In short: a wide variety of possibilities, however always flexible, quick and elegant.

### Glass elements

These consist of double or single glass in mono-block execution. Maximum thickness is 8 mm. The cavity can be provided with blinds or shutters. The glass can be covered with semi-transparent foil.

### Door elements

These consist of a three-part aluminium profile in which the lift-off hinges and astragals are included in the door at the factory. The door stiles are available in a number of models, depending of the type of door you select.



### Technical information

Wall thickness: 100 mm  
Wall height: up to 300 cm  
Modules: 120 cm

### Material

Panels: Gypsum plate 12.5 mm  
Alu. profiles: AlMgSi 0.5  
Isolation: Rock wool, thickness 45 mm

### Finishing:

Steel parts: Hot-galvanised  
Alu. components: Anodised or enamelled in colour  
Panels: Vinyl, textile, paintwork or gypsum (texture coating)  
Sound insulation: 45 dB (report number A752/Peutz)  
Fire resistance: 60 min. (report number 230700995)





# TECHNOWAND GLASS PARTITIONING

Glass elements as monobloc can be produced in all dimensions and can be installed either vertically or horizontally. The installation itself is implemented in the same easy manner as the partitioning system in the partitioning or as a glass partitioning.

### Basic structure

The glass elements are of the monobloc type and consist of an aluminium frame including a double or single glazing, installed in a PVC profile in the U-shaped section of the aluminium profile. Wooden partitioning can also be manufactured as single or double glazing.

### Blinds – Shutters

Vertical blinds or shutters can be built-in in the cavity. The blinds can either be closed or opened by means of a turning knob or by means of a rod-crank. Opened or closed, the wall provides an elegant look. Open: clear view. Closed: peace and privacy.

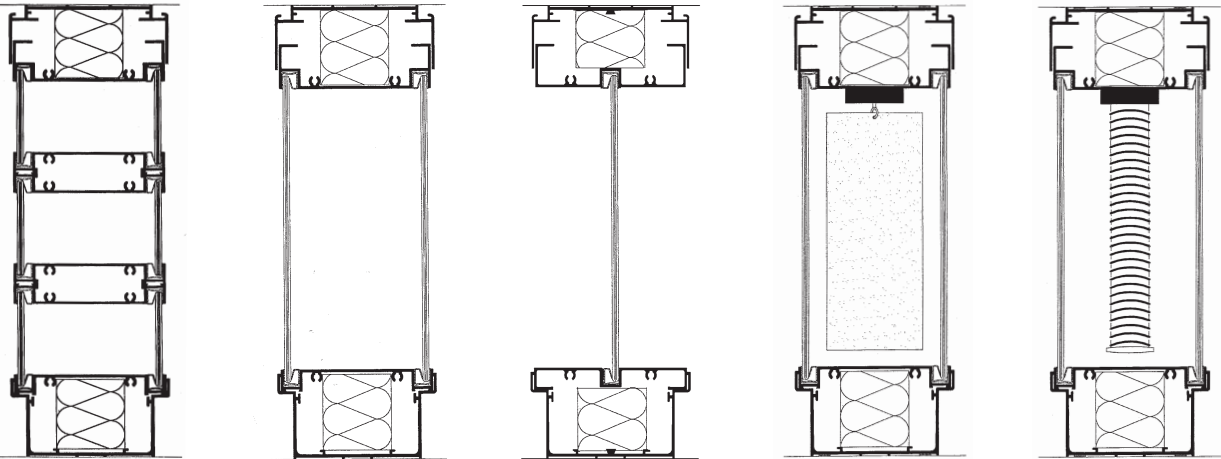
### Dimensions

Blinds available in all colours.  
Width 50 mm, maximum dimension:  
1200 x 3000 mm.

Shutters available in all colours.  
16 mm min; 550 max; 1200 x 2300 mm  
25 mm min; 350 max; 1200 x 3000 mm

### Transparent foil

Windows can be coated with a semi-transparent foil, at the inner or outer side, as well. This could be combined with your company logo or any other figuration.



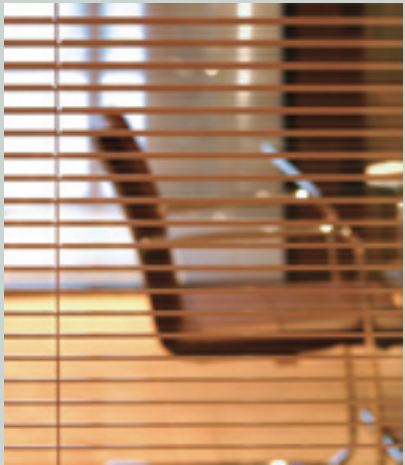
### Technical information

Wall thickness: 100 mm  
Wall height: up to 3200 mm

### Materials

Glazing: 4 up to and including 8 mm for double glazed partitioning  
Single glazed partitioning up to 12mm  
Shutters: 16 and 25 mm aluminium  
Colours from the standard collection  
(on request a colour index chart is available)

Sound insulation: 37 dB (report number A752/Peutz)  
Fire resistance: 30 min. (report number 2005 CVB R0065/TNO)





# TECHNOWAND FULL GLASS PARTITIONING

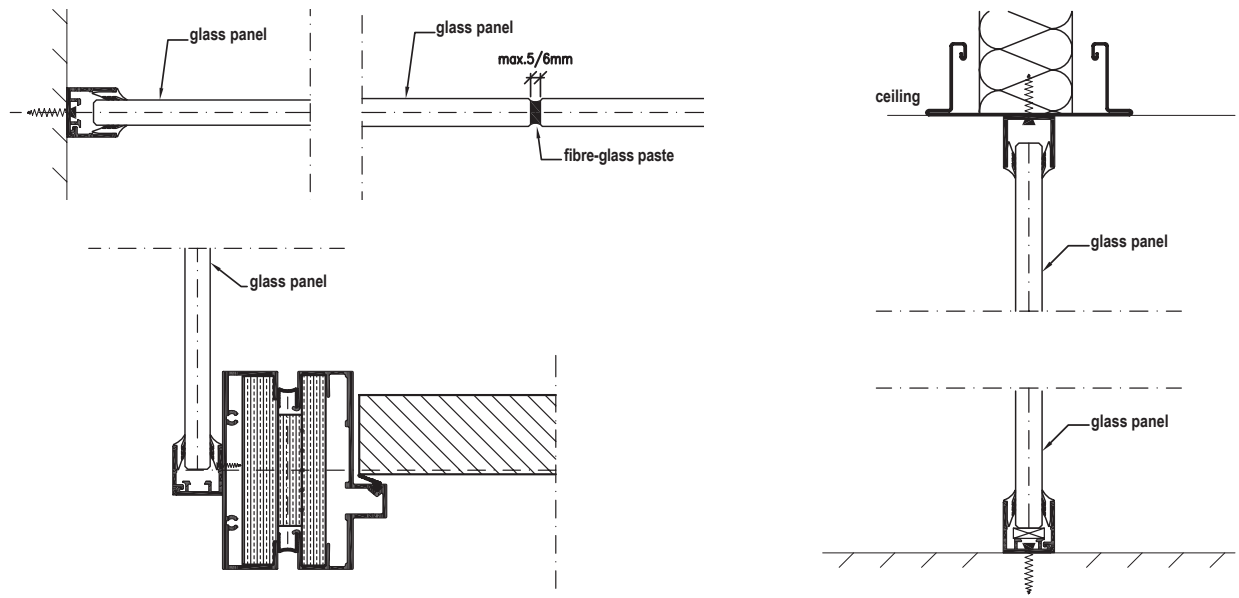
Dynamic organisations require flexible housing. A housing in which you want the workplace to represent style and a pleasant atmosphere in order to ensure that work can be done in peace. The TW2000 full glass partitioning system offers you a multitude of opportunities to realise this.

### Basic structure

The basis of the system is made up of glass panels of hardened or laminated glass. These ceiling-high glass panels are fixed to the ceiling and floor by means of aluminium profiles and U-profiles. The tolerances in the U-profile between glass and profile are filled up by means of a rubber profile. The vertical seams or joints are connected by means of black or transparent fibre-glass paste. The glass panels can be covered with a semi-transparent foil in order to guarantee privacy of the workplace.

### Door elements

Glass doors can be built into these glass walls, in any width or height. The wooden doors are integrated in the partitioning by means of an aluminium profile.



### Technical information

Glass thickness: 10, 12 or 18 mm  
Wall height: up to approx. 3000 mm

### Materials

Profiles: Aluminium AlMgSi 0,5  
Glass: Hardened or laminated glass, figure glass and glass with acoustic foil

### Finishing

Aluminium: Anodised (natural 10 mu) or enamelled in colour  
Paste: Fibre-glass paste, transparent or black

Sound isolation: Rw 38dB (report Peutz G 15210-1)





# TECHNOWAND DOORS

We produce doors in all models, dimensions and materials. Wood, hardened glass, steel, aluminium or a combination thereof. In a double or single model, single way opening or revolving as pivoting doors or a sliding door. Naturally at all times fine-tuned to your preferences and fitting the architecture of the work environment.

### Door elements

The door frame consists of a three-part aluminium frame including gaskets, fitted during production. Four different frame models are available: straight, round, lipped or as a block model. The doors are hinged by means of nylon supported aluminium or stainless steel lift-off hinges.

### Hardened glass doors

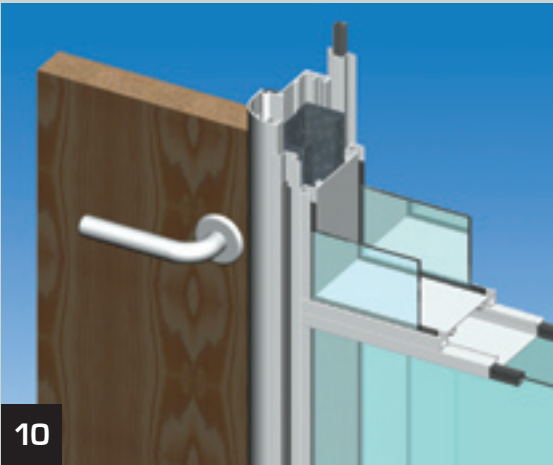
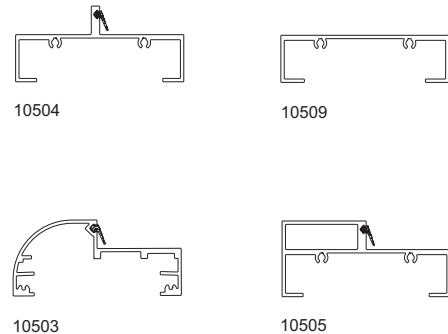
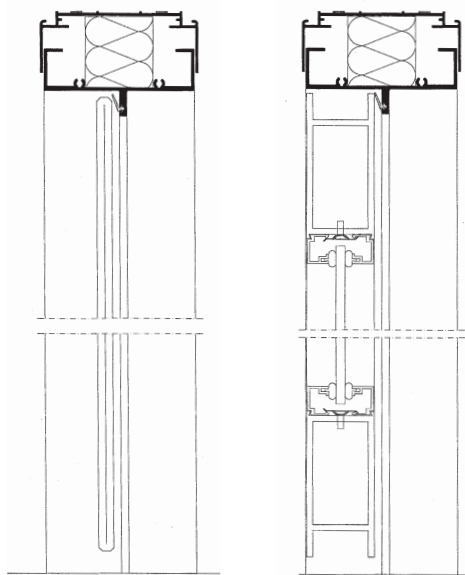
Hardened glass door can be executed in various glass thicknesses and glass types. Door / glass thickness: 8 or 12 mm; door height: up to 280 cm.

### Aluminium doors

The door frame consists of aluminium profiles in which single as well as double glass can be installed. If required intermediate sills can be applied as well. Door thickness: 46 mm; glazing: 4 up to and including 6 mm; Door height: up to 300 cm.

### Wooden doors

Wooden doors have a honeycomb or solid-core chipboard filling. Doors can be spray-painted in any preferred RAL or Sikkens colour. Covering by means of HPL (Formica, Duropal, Resopal, Polyrey, Serapal) is possible. Door thickness: 40 mm; door height: up to 295.5 cm.



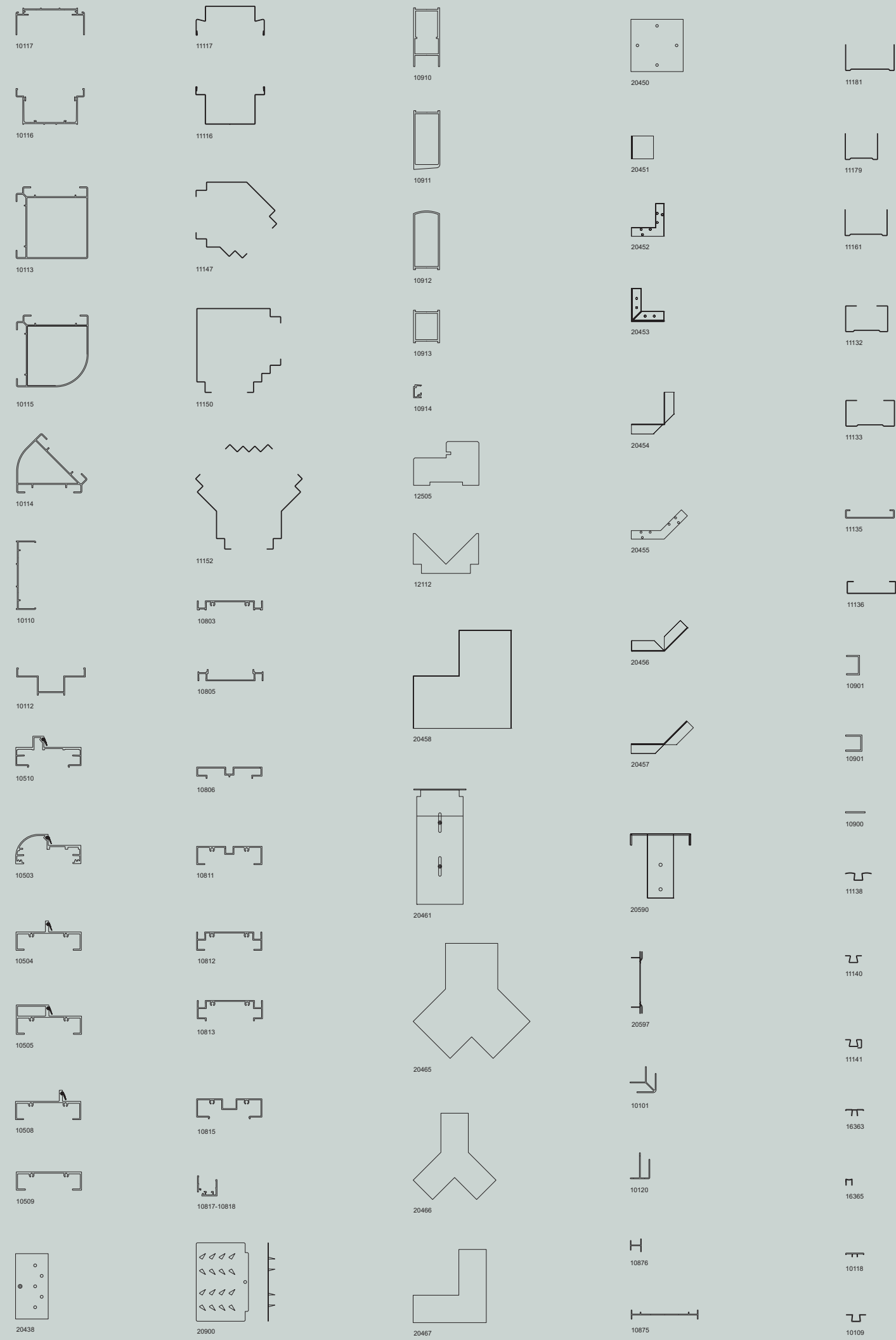
<b>General</b>		
Sound insulation:	28 dB	(without dropping sill)
	32 dB	(including a dropping sill)
Fire resistance:	30 min.	(report number CL 105-1/Peutz)





# TECHNOWAND SPECIALS

Within our company we refer to specials as our solutions for integrated office furniture. This could include reception desks and kitchenettes, but also cupboards integrated in the partitioning. This refers to custom-made production. Naturally this will be in close cooperation with you, your interior designer or architect. Here the original design and functionality for the designer are at the centre of the attention.







## TechnoWand

**Visiting address:**

Ambachtsstraat 1-3  
7122 MP Aalten  
The Netherlands

**Postal address:**

TechnoWand  
P.O. Box 224  
7120 AE Aalten  
The Netherlands

Tel. +31 (0)543 47 51 15

Fax + 31 (0)543 47 66 55

E-mail: [info@technowand.nl](mailto:info@technowand.nl)

[www.technowand.nl](http://www.technowand.nl)